

# **DRAFTING UPDATE MODULES B & C**

VIRTUAL PUBLIC MEETING  
FEBRUARY 25, 2026

# MEETING AGENDA



- » **Review drafting progress since last meeting**
- » **Highlight key changes to Module A content based on feedback**
- » **Review of site development standards under consideration**
- » **Review permitted and conditional uses by district**
- » **Discuss next steps in the drafting process**
- » **Introduce consolidated use table and method to provide feedback**



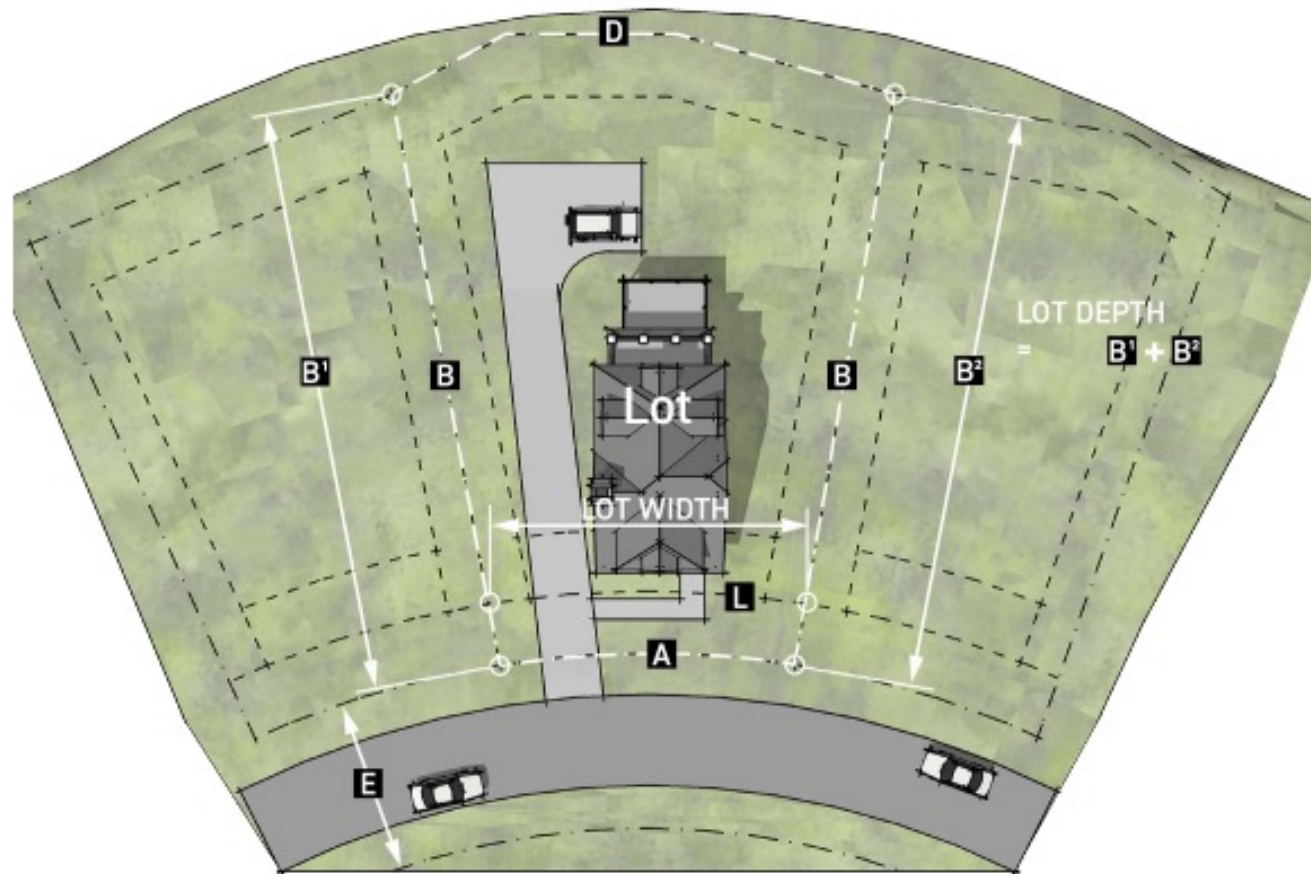
### **BASED ON YOUR FEEDBACK:**

- » **Adjustments made to Agricultural Rural and Agricultural Preservation (now Rural Preservation)**
- » **Modifications to purpose statements**
- » **Edits to use categories and definitions**
- » **Reflected in redline documents that will be provided online for review**

# GENERAL SITE DESIGN STANDARDS



## » Rules of Measurement

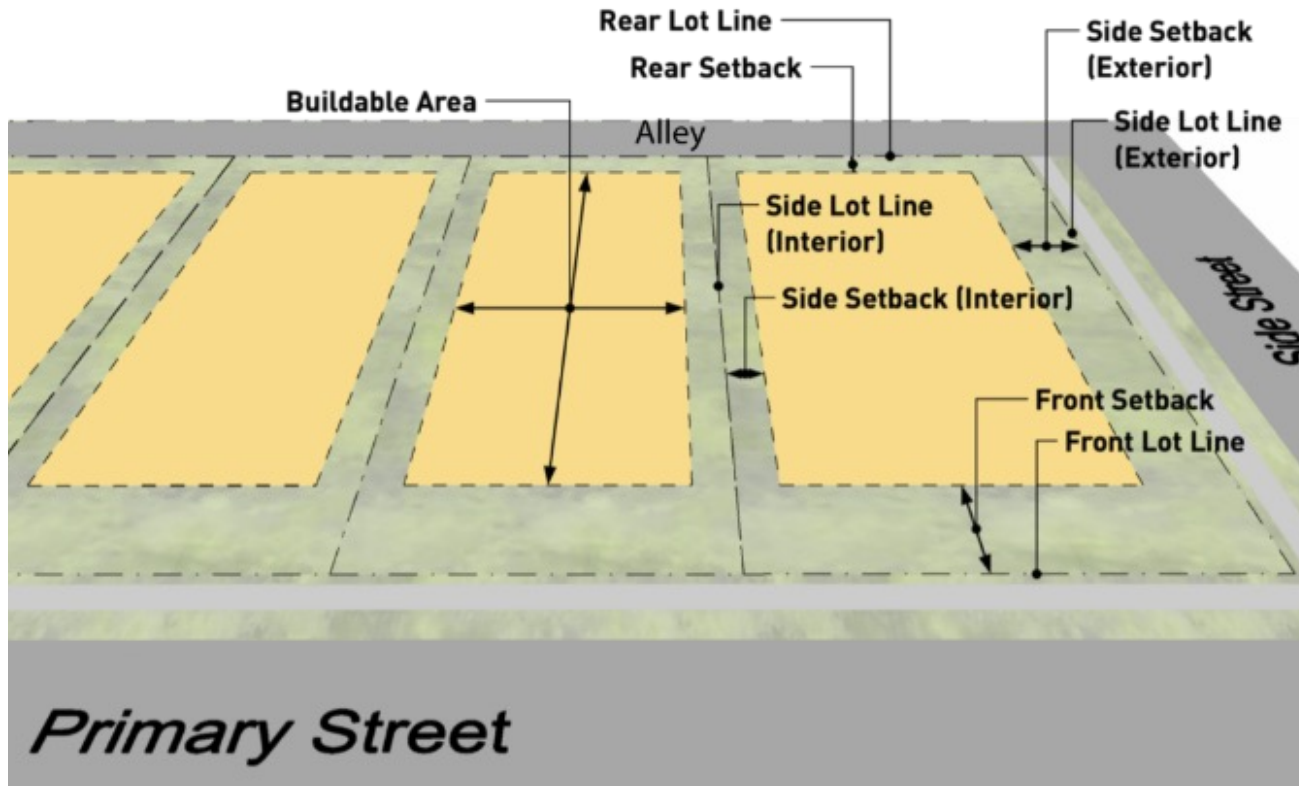


- » Establishing norms for measurement
- » Calculating lot and development site dimensions
- » Identify unique lot configurations and how to measure

# GENERAL SITE DESIGN STANDARDS



## » Site Setbacks and Building Envelopes

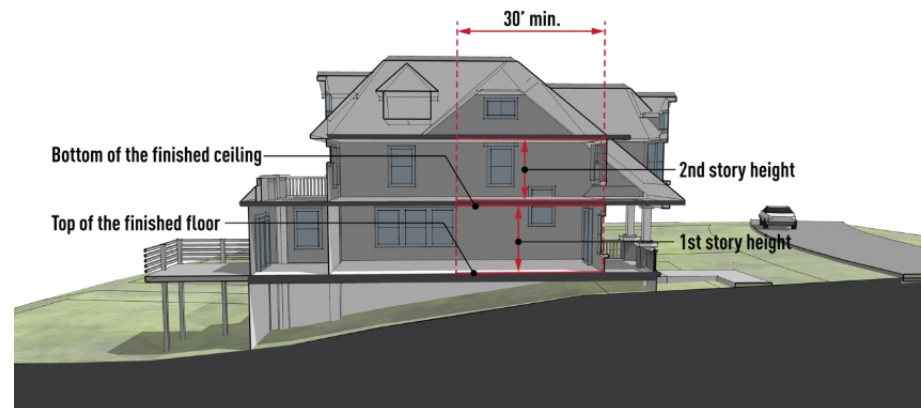
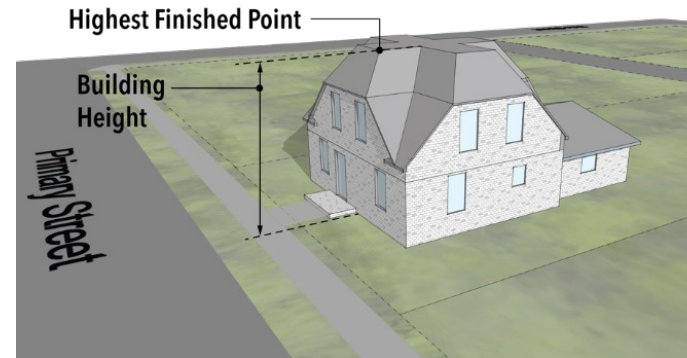
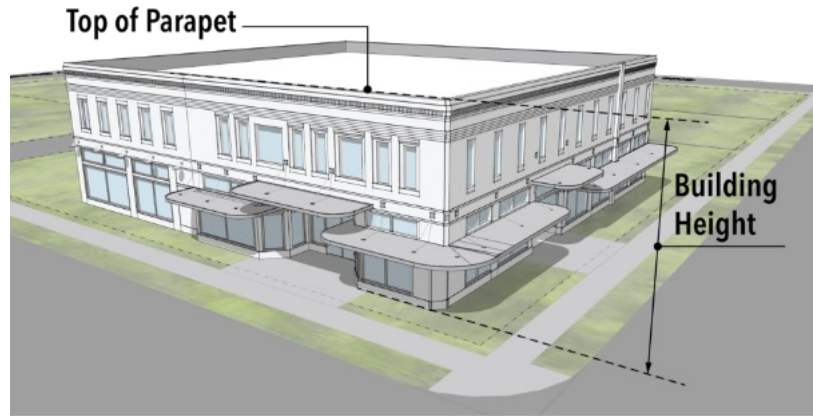


- » Establish setback types
- » Identify from where and how setbacks are measured
- » Identify methodology for measurement where a lot may be irregular
- » Clarify how to address encroachments

# GENERAL SITE DESIGN STANDARDS



## » Building Height



» Establish how height is measured

» Identify unique situations where height may be assessed differently

» Clarify how to address encroachments

# NEXT STEPS



## **DISTRICT-SPECIFIC STANDARDS**

» Released for review and feedback in mid-March

## **LATE MARCH - MODULE D UPDATE**

» Parking and Loading

» Landscaping

» Environmental Protections and Open Space

» Signs

» Administrative Procedures

# OS - OPEN SPACE ZONING DISTRICT



## USES BY DISTRICT

### PERMITTED

*Civic*

*Community Garden*

*Parks*

*Recreation, Passive*

*Wireless communications facilities, subject to  
the provisions of article 4, section 4.92.*

### CONDITIONAL

*Ecotourism*

*Cemeteries*

*Recreation, Outdoor*

# RP - RURAL PRESERVATION ZONING DISTRICT



## USES BY DISTRICT

### PERMITTED

*Accessory Dwelling Unit*

*Manufactured Home*

*Single-section Manufactured Home*

*Single-unit*

*Transitional Housing - Supportive*

*Agriculture*

*Agriculture - High-intensity*

*Agritourism*

*Child Care Agency*

*Child Care Center*

*Child Care Home - Family*

*Civic*

*Community Garden*

*Food Pantry*

*Parks*

*Recreation, Passive*

*Rifle range - Indoor*

*Rifle range - Outdoor*

*Rural Retreat*

*Special trades contractor services*

*Veterinary clinics, large animal*

*Veterinary clinics, small animal*

*Winery*

*Wireless communications facilities, sub-ject to  
the provisions of article 4, section 4.92.*

### CONDITIONAL

*Agriculture - Related business*

*Air Transportation*

*Animal Hospital*

*Cemeteries*

*Commercial mulching operation*

*Crematorium*

*Education - College, University*

*Education - Trade*

*Event Venue*

*Golf course*

*Lodging - Bed & Breakfast*

*Marinas*

*Mining, Extraction, Support services*

*Personal Services*

*Place of Assembly or Worship*

*Recreation, Outdoor*

*Renewable Energy Facility*

# AR - AGRICULTURAL RURAL ZONING DISTRICT



## USES BY DISTRICT

### PERMITTED

- Accessory Dwelling Unit*
- Manufactured Home*
- Single-section Manufactured Home*
- Single-unit*
- Transitional Housing - Supportive*
- Agriculture*
- Agriculture - High-intensity*
- Agriculture - Related business*
- Child Care Home - Family*
- Civic*
- Community Garden*
- Food Pantry*
- Parks*
- Recreation, Passive*
- Storage - Indoor*
- Veterinary clinics, large animal*
- Winery*
- Wireless communications facilities, sub-ject to the provisions of article 4, section 4.92.*

### CONDITIONAL

- Agritourism*
- Cemeteries*
- Commercial mulching operation*
- Education - Trade*
- Event Venue*
- Kennel and animal boarding*
- Landfill*
- Lodging - Bed & Breakfast*
- Marinas*
- Place of Assembly or Worship*
- Recreation, Outdoor*
- Renewable Energy Facility*
- Storage - Outdoor*
- Veterinary clinics, small animal*

# RR -RURAL RESIDENTIAL ZONING DISTRICT



## USES BY DISTRICT

### PERMITTED

*Accessory Dwelling Unit*

*Manufactured Home*

*Single-section Manufactured Home*

*Single-unit*

*Transitional Housing - Supportive*

*Agriculture*

*Child Care Home - Family*

*Civic*

*Community Garden*

*Parks*

*Recreation, Passive*

### CONDITIONAL

*Golf course*

*Lodging - Bed & Breakfast*

*Place of Assembly or Worship*

*Wireless communications facilities, sub-ject to the provisions of article 4, section 4.92.*

# NRI - NEIGHBORHOOD RESIDENTIAL ZONING DISTRICT



## USES BY DISTRICT

### PERMITTED

*Accessory Dwelling Unit*

*Manufactured Home*

*Single-section Manufactured Home*

*Single-unit*

*Transitional Housing - Supportive*

*Child Care Home - Family*

*Civic*

*Community Garden*

*Parks*

### CONDITIONAL

*Place of Assembly or Worship*

*Wireless communications facilities, sub-ject to the provisions of article 4, section 4.92.*

# NR2 - NEIGHBORHOOD RESIDENTIAL ZONING DISTRICT



## USES BY DISTRICT

### PERMITTED

- Accessory Dwelling Unit*
- Manufactured Home*
- Single-unit*
- Single-unit attached*
- Townhouse*
- Two-unit, side by side*
- Two-unit, stacked*
- Transitional Housing - Supportive*
- Child Care Home - Family*
- Civic*
- Community Garden*
- Parks*

### CONDITIONAL

- Golf course*
- Lodging - Bed & Breakfast*
- Place of Assembly or Worship*
- Wireless communications facilities, sub-ject to the provisions of article 4, section 4.92.*

# MRI - MIXED RESIDENTIAL ZONING DISTRICT



## USES BY DISTRICT

### PERMITTED

*Accessory Dwelling Unit*

*Manufactured Home*

*Multiplex*

*Single-unit*

*Single-unit attached*

*Townhouse*

*Two-unit, side by side*

*Two-unit, stacked*

*Transitional Housing - Supportive*

*Child Care Home - Family*

*Civic*

*Community Garden*

*Parks*

### CONDITIONAL

*Lodging - Bed & Breakfast*

*Place of Assembly or Worship*

*Wireless communications facilities, sub-ject to the provisions of article 4, section 4.92.*

# MR2 - MIXED RESIDENTIAL ZONING DISTRICT



## USES BY DISTRICT

### PERMITTED

- Accessory Dwelling Unit*
- Manufactured Home*
- Multiplex*
- Single-unit*
- Single-unit attached*
- Townhouse*
- Two-unit, side by side*
- Two-unit, stacked*
- Transitional Housing - Supportive*
- Child Care Center*
- Child Care Home - Group*
- Child Care Home - Family*
- Civic*
- Community Garden*
- Financial Services, FDIC*
- Parks*

### CONDITIONAL

- Eating and drinking establishments*
- Education - Pre-K Facility*
- Golf course*
- Laundry and dry cleaning, excluding processing*
- Lodging - Bed & Breakfast*
- Office and Professional Services*
- Personal Services*
- Place of Assembly or Worship*
- Wireless communications facilities, subject to the provisions of article 4, section 4.92.*

# TND - TRADITIONAL NEIGHBORHOOD DEVELOPMENT ZONING DISTRICT



## USES BY DISTRICT

### PERMITTED

*Accessory Dwelling Unit*

*Above ground floor dwelling*

*Multiplex*

*Multi-unit, small*

*Single-unit*

*Single-unit attached*

*Townhouse*

*Two-unit, side by side*

*Two-unit, stacked*

*Transitional Housing - Supportive*

*Care Center*

*Child Care Agency*

*Child Care Center*

*Child Care Home - Group*

*Child Care Home - Family*

*Civic*

*Community Garden*

*Financial Services, FDIC*

*Food Bank*

*Food Pantry*

*Parks*

### CONDITIONAL

*Eating and drinking establishments*

*Education - Pre-K Facility*

*Galleries and exhibition space*

*Laundry and dry cleaning,  
excluding processing*

*Lodging - Bed & Breakfast*

*Office and Professional Services*

*Personal Services*

*Place of Assembly or Worship*

*Wireless communications facilities,  
sub-ject to the provisions  
of article 4, section 4.92.*

# RHB - RURAL HUB ZONING DISTRICT



## USES BY DISTRICT

### PERMITTED

<i>Above ground floor dwelling</i>	<i>Galleries and exhibition space</i>
<i>Agriculture - Related business</i>	<i>Laundry and dry cleaning, excluding processing</i>
<i>Care Center</i>	<i>Craft Manufacturing</i>
<i>Child Care Agency</i>	<i>Medical and dental clinics, offices, laboratories, outpatient</i>
<i>Child Care Center</i>	<i>Parks</i>
<i>Child Care Home - Group</i>	<i>Personal Services</i>
<i>Civic</i>	<i>Place of Assembly or Worship</i>
<i>Community Garden</i>	<i>Repair and maintenance (excluding vehicles)</i>
<i>Cultural Services</i>	<i>Retail - Small scale</i>
<i>Drive Through Facility</i>	<i>Special trades contractor services</i>
<i>Eating and drinking establishments</i>	<i>Vehicle - Fuel services</i>
<i>Education - Primary and Secondary</i>	<i>Vehicle - Maintenance</i>
<i>Education - College, University</i>	<i>Wireless communications facilities, subject to the provisions of article 4, section 4.92.</i>
<i>Education - Pre-K Facility</i>	
<i>Education - Trade</i>	
<i>Event Venue</i>	
<i>Financial Services, FDIC</i>	
<i>Food Bank</i>	
<i>Food Pantry</i>	
<i>Food Truck Park</i>	

# RHB - RURAL HUB ZONING DISTRICT



---

## USES BY DISTRICT

---

### CONDITIONAL

---

*Animal Hospital*

*Construction Sales and Service*

*Kennel and animal boarding*

*Live Performance Venue - Outdoor*

*Lodging - Recreational Vehicle*

*Micro Brewery/Distillery*

*Micro-winery*

*Office and Professional Services*

*Parking - Surface*

*Recreation, Indoor*

*Veterinary clinics, large animal*

*Veterinary clinics, small animal*

---

# NMU - NEIGHBORHOOD MIXED-USE ZONING DISTRICT



## USES BY DISTRICT

### PERMITTED

<i>Above ground floor dwelling</i>	<i>Galleries and exhibition space</i>
<i>Multiplex</i>	<i>Laundry and dry cleaning, excluding processing</i>
<i>Multi-unit, large</i>	<i>Lodging - Bed &amp; Breakfast</i>
<i>Multi-unit, small</i>	<i>Medical and dental clinics, offices, laboratories, outpatient</i>
<i>Townhouse</i>	<i>Parks</i>
<i>Transitional Housing - Supportive</i>	<i>Parking - Surface</i>
<i>Care Center</i>	<i>Personal Services</i>
<i>Child Care Agency</i>	<i>Place of Assembly or Worship</i>
<i>Child Care Center</i>	<i>Retail - Small scale</i>
<i>Child Care Home - Group</i>	<i>Vehicle - Fuel services</i>
<i>Civic</i>	<i>Wireless communications facilities, sub-ject to the provisions of article 4, section 4.92.</i>
<i>Community Garden</i>	
<i>Cultural Services</i>	
<i>Eating and drinking establishments</i>	
<i>Education - Primary and Secondary</i>	
<i>Education - Pre-K Facility</i>	
<i>Financial Services, FDIC</i>	
<i>Food Bank</i>	
<i>Food Pantry</i>	

# NMU - NEIGHBORHOOD MIXED-USE ZONING DISTRICT



---

## USES BY DISTRICT

---

### CONDITIONAL

---

*Drive Thru Facility*

*Food Truck Park*

*Craft Manufacturing*

*Micro Brewery/Distillery*

*Micro-winery*

*Office and Professional Services*

*Vehicle - Maintenance*

*Veterinary clinics, small animal*

---

# MUCC - MIXED-USE COMMUNITY CORRIDOR ZONING DISTRICT



## USES BY DISTRICT

### PERMITTED

*Above ground floor dwelling*

*Multiplex*

*Multi-unit, large*

*Multi-unit, small*

*Townhouse*

*Transitional Housing - Supervised*

*Transitional Housing - Supportive*

*Transitional Housing - Temporary*

*Animal Hospital*

*Care Center*

*Child Care Agency*

*Child Care Center*

*Child Care Home - Group*

*Civic*

*Community Garden*

*Cultural Services*

*Eating and drinking establishments*

*Education - Primary and Secondary*

*Education - College, University*

*Education - Pre-K Facility*

*Education - Trade*

*Event Venue*

*Financial Services, FDIC*

*Food Bank*

*Food Pantry*

*Food Truck Park*

*Galleries and exhibition space*

*Laundry and dry cleaning,  
excluding processing*

*Live Performance Venue - Indoor*

*Lodging - Hotel, Motel*

*Medical and dental clinics, offices,  
laboratories, outpatient*

*Micro Brewery/Distillery*

*Micro-winery*

*Nightclubs and Bars*

*Office and Professional Services*

*Parks*

*Parking - Structure*

*Personal Services*

*Place of Assembly or Worship*

*Recreation, Indoor*

# MUCC - MIXED-USE COMMUNITY CORRIDOR ZONING DISTRICT



## USES BY DISTRICT

### PERMITTED

- Repair and maintenance (excluding vehicles)*
- Retail - Heavy, Rental and Service*
- Retail - Large scale*
- Retail - Small scale*
- Vehicle - Fuel services*
- Veterinary clinics, small animal*
- Wireless communications facilities, sub-ject to the provisions of article 4, section 4.92.*

### CONDITIONAL

- Drive Though Facility*
- Funeral Services*
- Live Performance Venue - Outdoor*
- Craft Manufacturing*
- Parking - Surface*
- Recreation, Outdoor*
- Self Storage - Outdoor*
- Special trades contractor services*
- Vehicle - Maintenance*

# HC - HIGHWAY COMMERCIAL ZONING DISTRICT



## USES BY DISTRICT

### PERMITTED

<i>Above ground floor dwelling</i>	<i>Education - Pre-K Facility</i>
<i>Multiplex</i>	<i>Education - Trade</i>
<i>Multi-unit, large</i>	<i>Event Venue</i>
<i>Multi-unit, small</i>	<i>Financial Services, Alternative</i>
<i>Transitional Housing - Supervised</i>	<i>Financial Services, FDIC</i>
<i>Transitional Housing - Temporary</i>	<i>Food Bank</i>
<i>Adult-oriented establishment</i>	<i>Food Pantry</i>
<i>Agriculture - Related business</i>	<i>Food Truck Park</i>
<i>Animal Hospital</i>	<i>Funeral Services</i>
<i>Care Center</i>	<i>Galleries and exhibition space</i>
<i>Child Care Agency</i>	<i>Kennel and animal boarding</i>
<i>Child Care Center</i>	<i>Laboratories - Research, development, testing</i>
<i>Child Care Home - Group</i>	<i>Laundry and dry cleaning, excluding processing</i>
<i>Civic</i>	<i>Laundry and dry cleaning, including processing</i>
<i>Construction Sales and Service</i>	<i>Live Performance Venue - Indoor</i>
<i>Cultural Services</i>	<i>Live Performance Venue - Outdoor</i>
<i>Drive Through Facility</i>	<i>Lodging - Hotel, Motel</i>
<i>Eating and drinking establishments</i>	<i>Lodging - Recreational Vehicle</i>
<i>Education - Primary and Secondary</i>	<i>Craft Manufacturing</i>
<i>Education - College, University</i>	<i>Medical and dental clinics, offices, laboratories, outpatient</i>

# HC - HIGHWAY COMMERCIAL ZONING DISTRICT



## USES BY DISTRICT

### PERMITTED

*Medical clinics & facilities, inpatient*

*Micro Brewery/Distillery*

*Micro-winery*

*Nightclubs and Bars*

*Office and Professional Services*

*Parks*

*Parking - Structure*

*Parking - Surface*

*Personal Services*

*Place of Assembly or Worship*

*Recreation, Indoor*

*Repair and maintenance (excluding vehicles)*

*Retail - Heavy, Rental and Service*

*Retail - Large scale*

*Retail - Small scale*

*Rifle range - Indoor*

*Self Storage - Indoor*

*Self Storage - Outdoor*

*Special trades contractor services*

*Storage - Indoor*

*Storage - Outdoor*

*Vehicle - Fuel services*

*Vehicle - Large vehicle sales,  
rental, and storage*

*Vehicle - Maintenance*

*Vehicle - Repair*

*Vehicle - Sales and rental*

*Veterinary clinics, large animal*

*Veterinary clinics, small animal*

*Wholesale, warehousing, or  
distribution enterprise.*

*Wireless communications facilities,  
sub-ject to the provisions of  
article 4, section 4.92.*

### CONDITIONAL

*Industrial - Light*

*Junk and Wrecking yard*

# BC - BUSINESS AND COMMERCIAL ZONING DISTRICT



## USES BY DISTRICT

### PERMITTED

<i>Above ground floor dwelling</i>	<i>Laundry and dry cleaning, excluding processing</i>
<i>Transitional Housing - Temporary</i>	<i>Laundry and dry cleaning, Including processing</i>
<i>Care Center</i>	<i>Lodging - Hotel, Motel</i>
<i>Child Care Agency</i>	<i>Craft Manufacturing</i>
<i>Child Care Center</i>	<i>Medical and dental clinics, offices, laboratories, outpatient</i>
<i>Child Care Home - Group</i>	<i>Medical clinics &amp; facilities , inpatient</i>
<i>Civic</i>	<i>Office and Professional Services</i>
<i>Construction Sales and Service</i>	<i>Parks</i>
<i>Cultural Services</i>	<i>Parking - Structure</i>
<i>Drive Through Facility</i>	<i>Parking - Surface</i>
<i>Eating and drinking establishments</i>	<i>Personal Services</i>
<i>Education - College, University</i>	<i>Place of Assembly or Worship</i>
<i>Event Venue</i>	<i>Recreation, Indoor</i>
<i>Financial Services, Alternative</i>	<i>Repair and maintenance (excluding vehicles)</i>
<i>Financial Services, FDIC</i>	<i>Retail - Heavy, Rental and Service</i>
<i>Food Bank</i>	<i>Retail - Large scale</i>
<i>Food Pantry</i>	<i>Retail - Small scale</i>
<i>Food Truck Park</i>	<i>Rifle range - Indoor</i>
<i>Funeral Services</i>	<i>Self Storage - Indoor</i>
<i>Galleries and exhibition space</i>	<i>Self Storage - Outdoor</i>

# BC - BUSINESS AND COMMERCIAL ZONING DISTRICT



## USES BY DISTRICT

### PERMITTED

- Special trades contractor services*

---

- Storage - Indoor*

---

- Storage - Outdoor*

---

- Vehicle - Fuel services*

---

- Vehicle - Large vehicle sales, rental, and storage*

---

- Vehicle - Sales and rental*

---

- Wholesale, warehousing, or distribution enterprise.*

---

- Wireless communications facilities, sub-ject to the provisions of article 4, section 4.92.*

---

### CONDITIONAL

- Education - Primary and Secondary*

---

- Education - Pre-K Facility*

---

- Education - Trade*

---

- Laboratories - Research, development, testing*

---

- Live Performance Venue - Indoor*

# EC - EMPLOYMENT CAMPUS ZONING DISTRICT



## USES BY DISTRICT

### PERMITTED

<i>Above ground floor dwelling</i>	<i>Lodging - Hotel, Motel</i>
<i>Transitional Housing - Temporary</i>	<i>Craft Manufacturing</i>
<i>Care Center</i>	<i>Medical and dental clinics, offices, laboratories, outpatient</i>
<i>Child Care Agency</i>	<i>Medical clinics &amp; facilities , inpatient</i>
<i>Civic</i>	<i>Office and Professional Services</i>
<i>Cultural Services</i>	<i>Parks</i>
<i>Drive Though Facility</i>	<i>Parking - Structure</i>
<i>Eating and drinking establishments</i>	<i>Parking - Surface</i>
<i>Education - Primary and Secondary</i>	<i>Personal Services</i>
<i>Education - College, University</i>	<i>Place of Assembly or Worship</i>
<i>Education - Pre-K Facility</i>	<i>Repair and maintenance (excluding vehicles)</i>
<i>Education - Trade</i>	<i>Retail - Heavy, Rental and Service</i>
<i>Event Venue</i>	<i>Retail - Large scale</i>
<i>Financial Services, FDIC</i>	<i>Retail - Small scale</i>
<i>Food Bank</i>	<i>Self Storage - Indoor</i>
<i>Food Pantry</i>	<i>Self Storage - Outdoor</i>
<i>Laboratories - Research, development, testing</i>	<i>Special trades contractor services</i>
<i>Laundry and dry cleaning, excluding processing</i>	<i>Storage - Indoor</i>
<i>Laundry and dry cleaning, Including processing</i>	

# EC - EMPLOYMENT CAMPUS ZONING DISTRICT



## USES BY DISTRICT

### PERMITTED

*Vehicle - Fuel services*

*Vehicle - Large vehicle sales,  
rental, and storage*

*Wholesale, warehousing, or  
distribution enterprise.*

*Wireless communications facilities, sub-ject to  
the provisions of article 4, section 4.92.*

### CONDITIONAL

*Air Transportation*

*Industrial - Light*

*Information services and data  
pro-cessing services*

*Winery*

# TC - TOWN CENTER ZONING DISTRICT



## USES BY DISTRICT

### PERMITTED

*Above ground floor dwelling*

*Multiplex*

*Multi-unit, large*

*Multi-unit, small*

*Townhouse*

*Two-unit, side by side*

*Two-unit, stacked*

*Transitional Housing - Supportive*

*Care Center*

*Child Care Agency*

*Child Care Center*

*Child Care Home - Group*

*Civic*

*Community Garden*

*Cultural Services*

*Eating and drinking establishments*

*Education - Primary and Secondary*

*Education - College, University*

*Education - Pre-K Facility*

*Event Venue*

*Financial Services, FDIC*

*Food Bank*

*Food Pantry*

*Food Truck Park*

*Galleries and exhibition space*

*Laundry and dry cleaning,  
excluding processing*

*Live Performance Venue - Indoor*

*Lodging - Bed & Breakfast*

*Lodging - Hotel, Motel*

*Medical and dental clinics, offices,  
laboratories, outpatient*

*Office and Professional Services*

*Parks*

*Parking - Structure*

*Personal Services*

*Place of Assembly or Worship*

*Retail - Small scale*

*Wireless communications facilities, sub-ject to  
the provisions of article 4, section 4.92.*

# TC - TOWN CENTER ZONING DISTRICT



---

## USES BY DISTRICT

---

### CONDITIONAL

---

*Drive Though Facility*

*Live Performance Venue - Outdoor*

*Craft Manufacturing*

*Micro Brewery/Distillery*

*Micro-winery*

*Nightclubs and Bars*

*Parking - Surface*

*Recreation, Indoor*

*Repair and maintenance (excluding vehicles)*

*Retail - Heavy, Rental and Service*

*Retail - Large scale*

*Special trades contractor services*

*Veterinary clinics, small animal*

---

# LI - LIGHT INDUSTRIAL ZONING DISTRICT



## USES BY DISTRICT

### PERMITTED

<i>Agriculture - Related business</i>	<i>Micro Brewery/Distillery</i>
<i>Civic</i>	<i>Micro-winery</i>
<i>Commercial mulching operation</i>	<i>Office and Professional Services</i>
<i>Construction Sales and Service</i>	<i>Parking - Structure</i>
<i>Crematorium</i>	<i>Parking - Surface</i>
<i>Drive Thru Facility</i>	<i>Recreation, Indoor</i>
<i>Eating and drinking establishments</i>	<i>Renewable Energy Facility</i>
<i>Education - Trade</i>	<i>Repair and maintenance (excluding vehicles)</i>
<i>Financial Services, FDIC</i>	<i>Retail - Heavy, Rental and Service</i>
<i>Food Bank</i>	<i>Retail - Large scale</i>
<i>Funeral Services</i>	<i>Retail - Small scale</i>
<i>Galleries and exhibition space</i>	<i>Rifle range - Indoor</i>
<i>Industrial - Light</i>	<i>Rifle range - Outdoor</i>
<i>Information services and data processing services</i>	<i>Self Storage - Indoor</i>
<i>Junk and Wrecking yard</i>	<i>Self Storage - Outdoor</i>
<i>Laboratories - Research, development, testing</i>	<i>Special trades contractor services</i>
<i>Laundry and dry cleaning, excluding processing</i>	<i>Storage - Indoor</i>
<i>Laundry and dry cleaning, Including processing</i>	<i>Storage - Outdoor</i>
<i>Craft Manufacturing</i>	

# LI - LIGHT INDUSTRIAL ZONING DISTRICT



## USES BY DISTRICT

### PERMITTED

- Vehicle - Fuel services*
- Vehicle - Large vehicle sales, rental, and storage*
- Vehicle - Maintenance*
- Vehicle - Repair*
- Vehicle - Sales and rental*
- Wholesale, warehousing, or distribution enterprise.*
- Wireless communications facilities, sub-ject to the provisions of article 4, section 4.92.*

### CONDITIONAL

- Air Transportation*
- Event Venue*
- Food Pantry*
- Food Truck Park*
- Kennel and animal boarding*
- Landfill*
- Live Performance Venue - Indoor*
- Live Performance Venue - Outdoor*
- Lodging - Recreational Vehicle*
- Personal Services*
- Recreation, Outdoor*
- Veterinary clinics, large animal*
- Veterinary clinics, small animal*

# HI - HEAVY INDUSTRIAL ZONING DISTRICT



## USES BY DISTRICT

### PERMITTED

<i>Civic</i>	<i>Renewable Energy Facility</i>
<i>Commercial mulching operation</i>	<i>Repair and maintenance (excluding vehicles)</i>
<i>Construction Sales and Service</i>	<i>Retail - Heavy, Rental and Service</i>
<i>Crematorium</i>	<i>Retail - Large scale</i>
<i>Drive Through Facility</i>	<i>Rifle range - Indoor</i>
<i>Education - Trade</i>	<i>Rifle range - Outdoor</i>
<i>Industrial - Heavy</i>	<i>Self Storage - Indoor</i>
<i>Industrial - Light</i>	<i>Self Storage - Outdoor</i>
<i>Information services and data processing services</i>	<i>Special trades contractor services</i>
<i>Junk and Wrecking yard</i>	<i>Storage - Indoor</i>
<i>Laboratories - Research, development, testing</i>	<i>Storage - Outdoor</i>
<i>Laundry and dry cleaning, excluding processing</i>	<i>Vehicle - Fuel services</i>
<i>Laundry and dry cleaning, Including processing</i>	<i>Vehicle - Large vehicle sales, rental, and storage</i>
<i>Craft Manufacturing</i>	<i>Vehicle - Maintenance</i>
<i>Office and Professional Services</i>	<i>Vehicle - Repair</i>
<i>Parking - Structure</i>	<i>Vehicle - Sales and rental</i>
<i>Parking - Surface</i>	<i>Wholesale, warehousing, or distribution enterprise.</i>
<i>Recreation, Indoor</i>	<i>Wireless communications facilities, subject to the provisions of article 4, section 4.92.</i>

# HI - HEAVY INDUSTRIAL ZONING DISTRICT



---

## USES BY DISTRICT

---

### CONDITIONAL

---

*Air Transportation*

*Eating and drinking establishments*

*Food Bank*

*Salvage Yard*

*Kennel and animal boarding*

*Landfill*

*Live Performance Venue - Indoor*

*Live Performance Venue - Outdoor*

*Mining, Extraction, Support services*

*Personal Services*

*Retail - Small scale*

---

# PROVIDING FEEDBACK



## WHAT WILL BE POSTED:

- » Slide deck and recording
- » Consolidated use table for review
- » Red-line documents showing changes to district purpose statements and use definitions following public feedback
- » Survey link to provide specific feedback on uses by district