

Community Choices

October 2022

ADVANCE KNOX

Engage in our land use and transportation future.



How we got here

ADVANCE KNOX

Engage in our land use and transportation future.





Advance Knox is a process to create:



A **blueprint** for the County's future that is laid out in the form of goals and action strategies



A **compass** that guides direction for local-decision making (capital improvements, rezonings, etc.)



A **play book** to provide information to secure project funding, coordinate with future development, and shape policy and program decisions



A **communication** tool that articulates the County's vision and how the private sector can support that vision

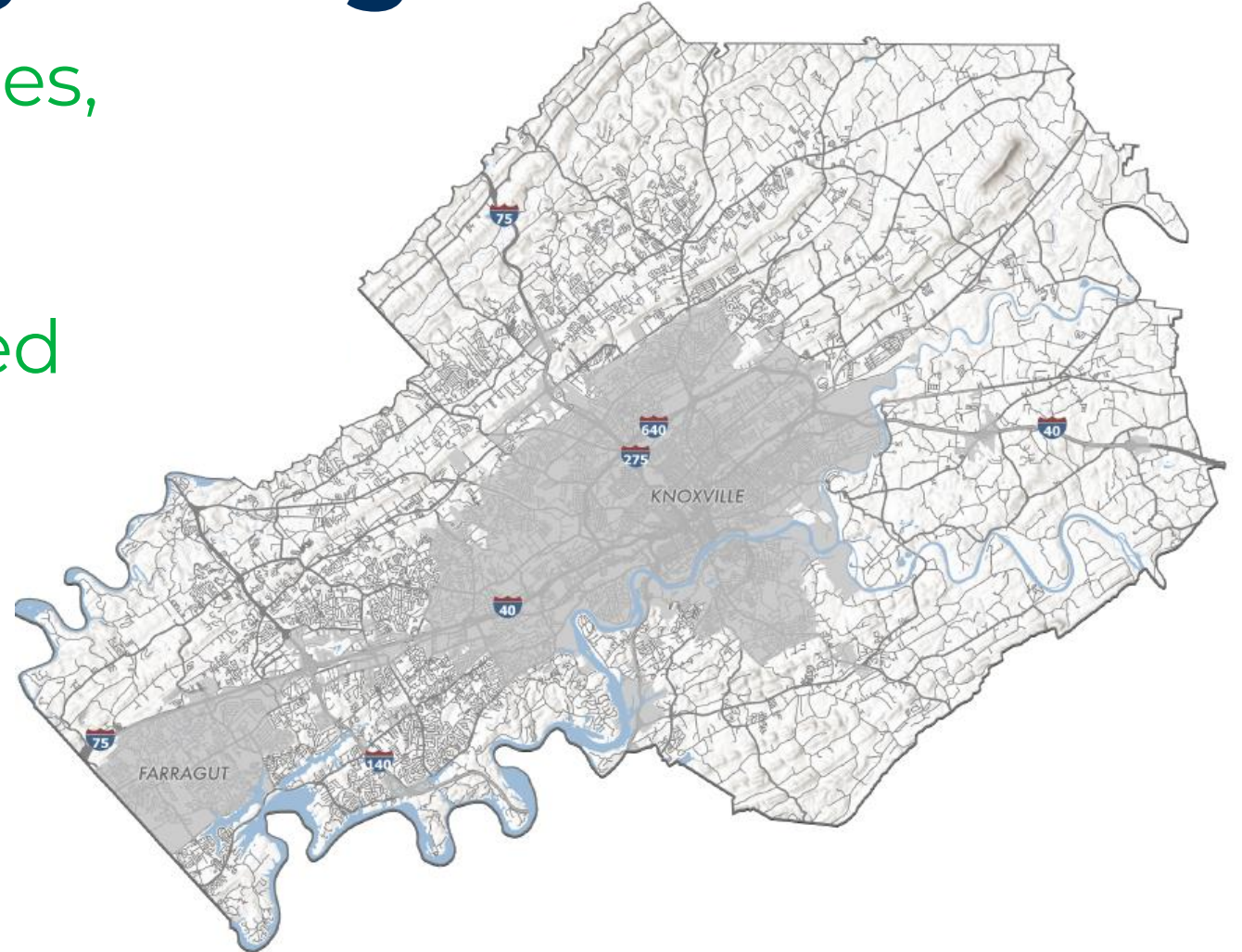
In the absence of local planning, someone else will make decisions for you.





Knox County is growing

Over the next two decades, over 75,000 additional people are expected to move into unincorporated areas in Knox County.





What is the process?

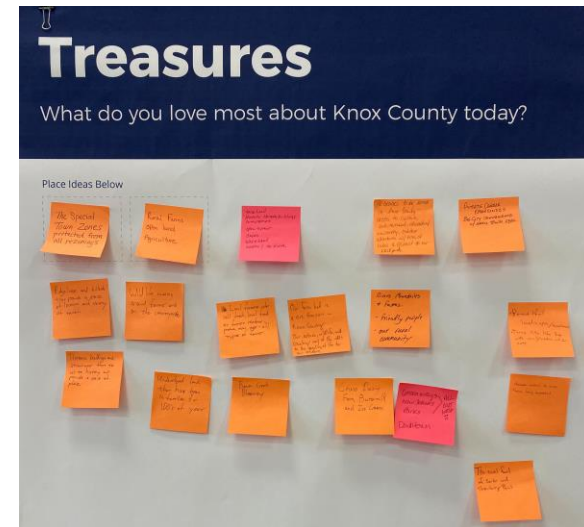
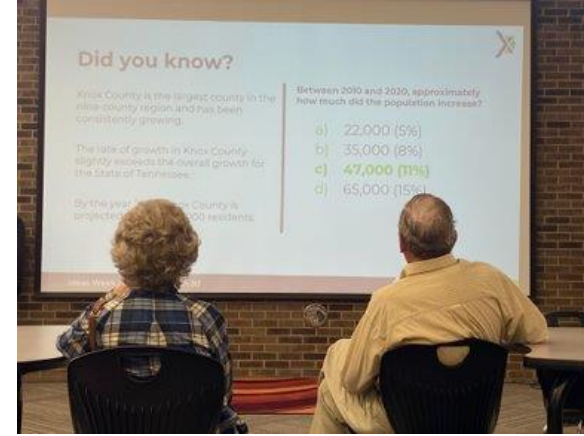


Ideas Week

Eight public events March 27-30

- Gibbs Middle School
- Hardin Valley Middle School
- Carter High School
- Virtual
- Northshore Elementary
- West High School
- South Doyle Middle School
- Powell High School

Online March 31-April 22



Vision and Goals

ADVANCE KNOX

Engage in our land use and transportation future.





Vision

A thriving county that honors its natural beauty and cultural heritage, while supporting diverse people and businesses.





Goals

Community Character

Strong places with distinct identities, including natural areas and development that range from employment centers to rural communities and include walkable neighborhoods and mixed-use centers.

Conservation

Conservation of natural areas and resources that include ridges and valleys, rivers and streams, wetlands, historic and agricultural assets and scenic views.

Infrastructure Investment

Efficient infrastructure investments that support and anticipate planned growth and are maintained through strategic, fiscally responsible decisions.

Economic Growth

A growing and resilient economy with sustained business investments and diverse employment opportunities, strengthening the county's fiscal health and services.

Workforce

Opportunities that attract, foster, and retain an engaged and successful workforce.

Housing Options

Housing and neighborhood options that meet a wide range of types, locations, and affordability to meet the need of a growing and changing population.

Transportation

A safe and connected transportation system that provides options and supports a growing community.

Recreation

A connected network of greenways, parks, and water trails that provide recreational opportunities.



Scenario Planning is about Choices

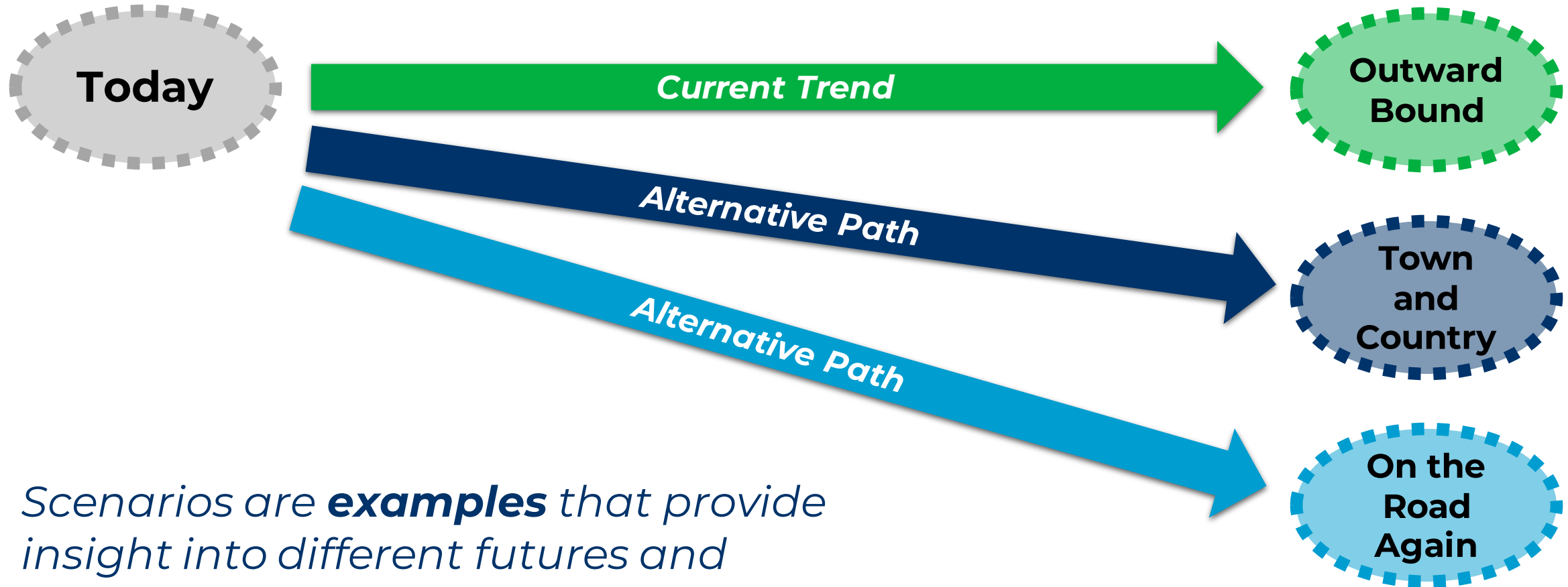
ADVANCE KNOX

Engage in our land use and transportation future.





Scenario Planning is about Choices



Scenarios are **examples** that provide insight into different futures and associated outcomes.



Scenario Planning Process



WHERE ARE WE NOW?

State of the County

Land Suitability

BASELINE MODEL

WHAT DOES THE FUTURE HOLD?

Future Trends

Population +
Employment
Projections

BASELINE MODEL +
PROJECTIONS

WHAT DO WE VALUE AND HOW
DO WE WANT TO GROW?

Vision
Statement

Goals

Indicators

We are here!

WHAT COULD WE DO TO MAKE
THE VISION A REALITY?

A

B

C

LET'S TEST THAT...

SCENARIO
SCORECARDS

WHICH COMBINATION OF
STRATEGIES GETS US CLOSEST TO
OUR VISION AND GOALS?

PREFERRED SCENARIO

TRANSLATE VISION TO REALITY

LAND USE
PLAN

CAPITAL
INVESTMENT
PLAN

GROWTH
POLICY
PLAN

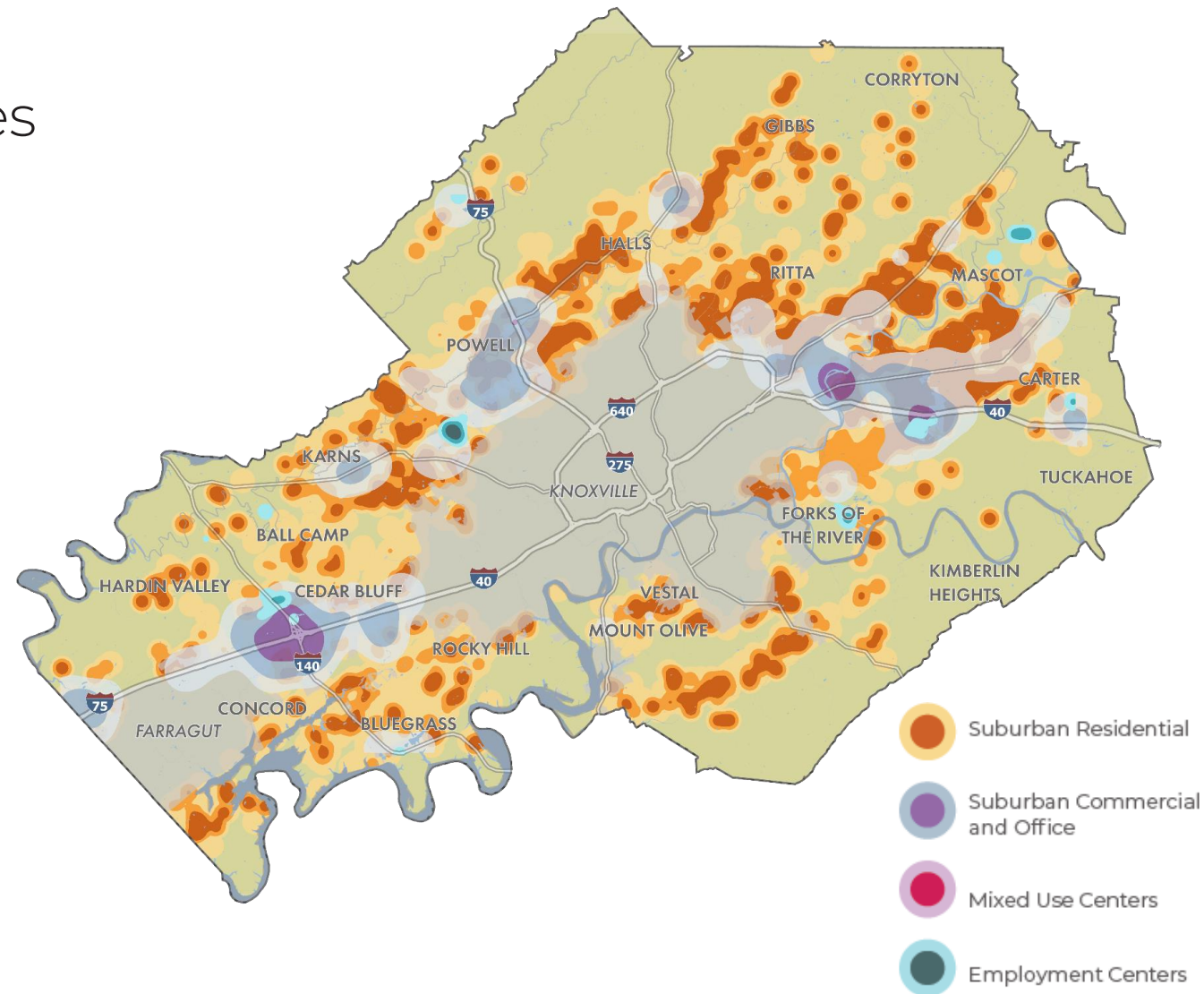




Outward Bound

In this scenario, growth continues in our existing pattern of single-family subdivisions in current hotspots and rural areas.

Employment occurs primarily in existing locations and strip commercial grows along major corridors.

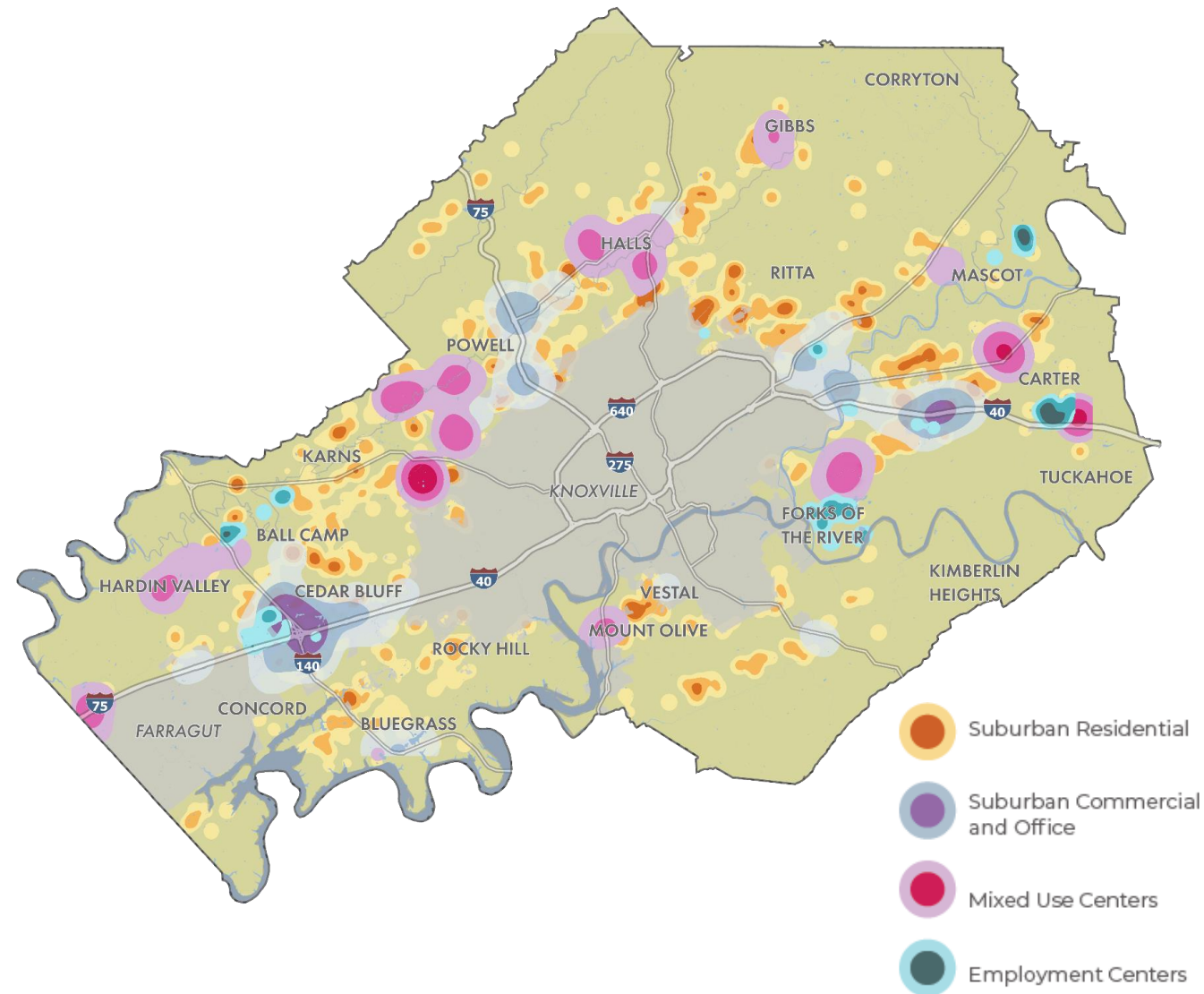




Town and Country

This scenario shows growth focused on our existing community and employment centers.

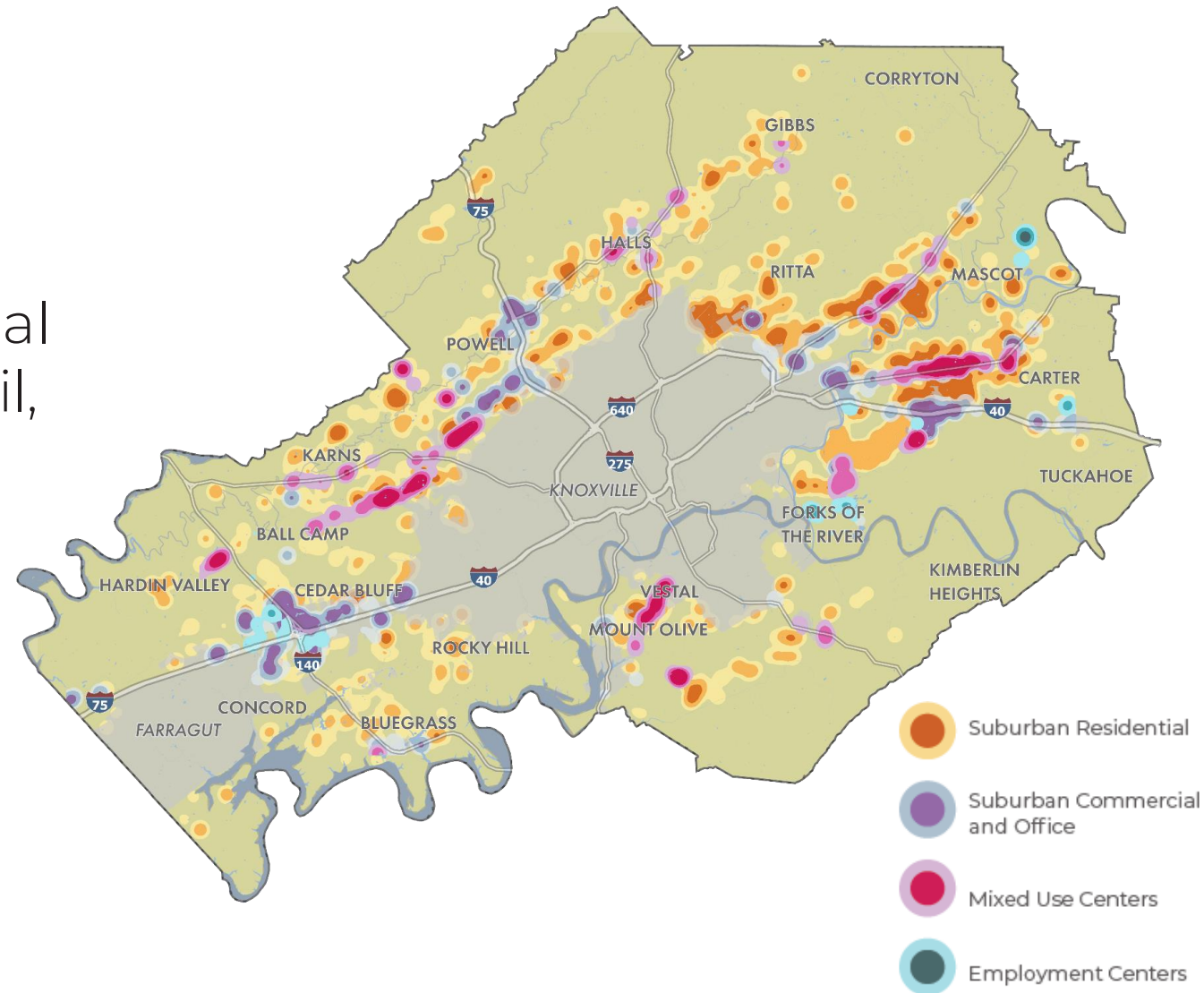
New centers are established with a mix of retail, offices, homes, schools, parks, and public spaces.





On The Road Again

This scenario includes suburban single-family growth that is balanced with an emphasis on redevelopment along commercial corridors to provide a mix of retail, employment, and multifamily housing.



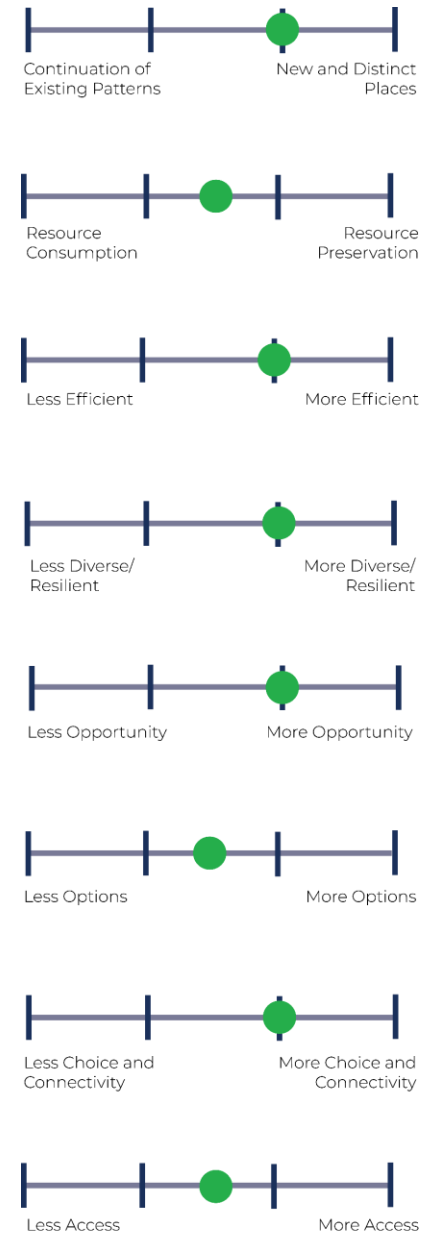
Outward Bound



Town and Country



On The Road Again



Activities

ADVANCE KNOX

Engage in our land use and transportation future.





Take the survey!

Complete the online survey to give us your feedback on scenarios.

1. Priorities

Which three of the goals are most important to you?

2. Communities

Different types of communities can be created to accommodate growth. Which of these types would you like to see more of in Knox County?

3. Choices

Rate each scenario and then write comments to tell us what you like or what concerns you about each.

4. Wrap up

Complete a brief exit questionnaire to tell us about yourself.



Tell others about Community Choices

Share input at
AdvanceKnox.org

ADVANCE KNOX

Engage in our land use and transportation future.

